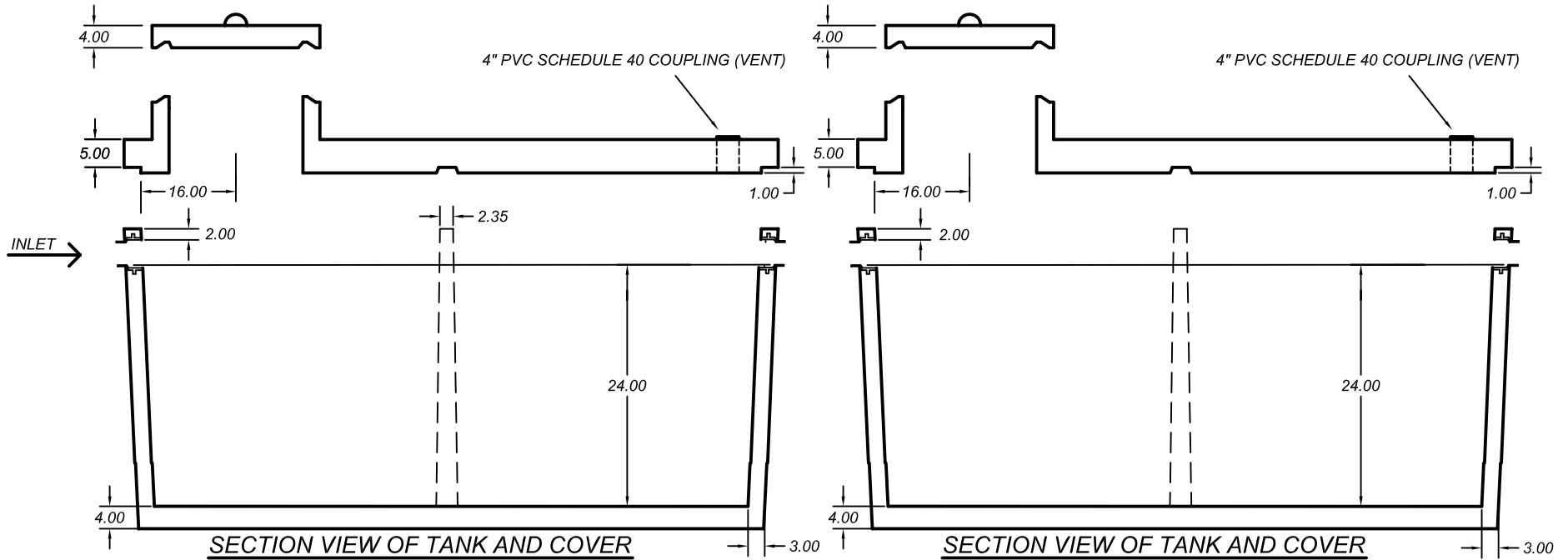


NOTE: 2666 SERIES LOW PRO HOLDING CONSISTS OF TWO 1333'S HOOKED IN SERIES END TO END OR SIDE BY SIDE.

NOTE: A 1' MANHOLE RISER IS POURED UPSIDE DOWN IN ALL HOLDING TANK COVERS.

NOTE: SEE INNER WALL PHOTO ON THE "EXCLUSIVELY AT SKAW'S" PAGE.



Model Number: **2666 SERIES LOW PRO HOLDING**

Approved for: HOLDING

Weight	Inlet Dim.	Outlet Dim.	Liq. Depth	Gal. / In.	Max. Cap.
32,000 lbs.	28"	28"	24"	111.00	2666 gal.

SKAW PRE-CAST

26255 105th Street, New Auburn
Wisconsin 54757
www.skawprecast.com

Phone: (715) 967-2277
Toll Free: 1-800-924-8625
Fax: (715) 967-2707