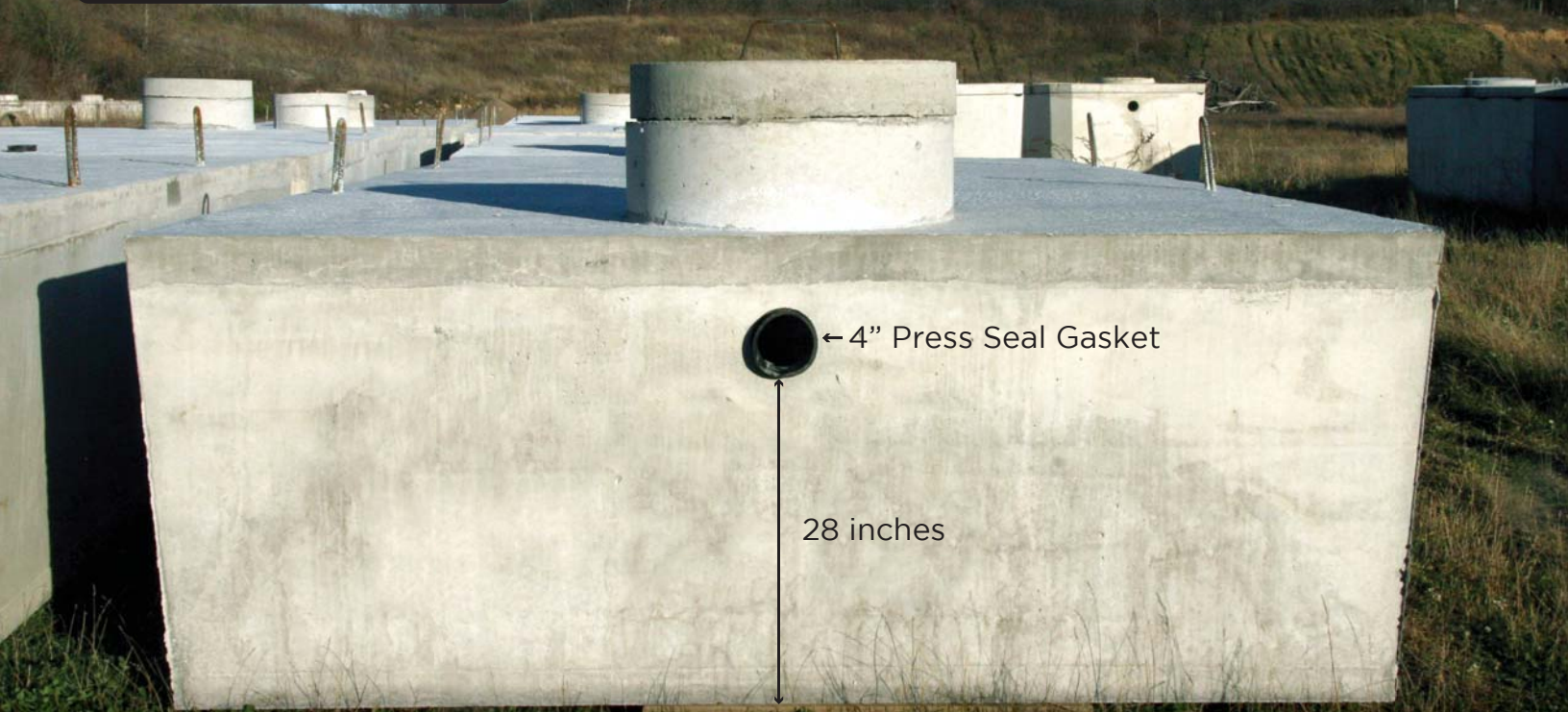




# CHOOSE THE BEST!

## SKAW Pre-Cast WS Series Concrete Holding Tanks



# PATENTED DESIGN ELIMINATES LEAKS



### ONE PIECE CONSTRUCTION

The WS Series Tanks are 2000 gallon concrete seamless cover joint holding tanks manufactured in a two-step process which eliminates exposed joints. This tank will not leak and features a 28" leak-proof inlet.



### WATER STOP SEAL

WS Series Tanks feature a Water Stop seal embedded into the walls of the tank and embedded into the cover of the tank through a two-stage pour. This poured in place seal eliminates the possibility of leaking at this seamless joint.



### ADDED STRENGTH

The addition of interior support columns and a fifth wall in the center of the tank provides significant additional support for the tank cover, floor, and walls increasing strength and durability to extend the life of your tank.

Homeowners might not give much thought to the differences between pre-cast septic holding tanks until they have a problem. Make the right choice upon installation and choose the Skaw Water Stop tank for your home or vacation property for extended life, better overall performance, and decreased maintenance. The patented design provides a stronger tank that eliminates groundwater or runoff from leaking into your tank. Water leaking into your tank can cause more frequent maintenance, yard problems, or premature failure.

## PATENTED DESIGN

The Skaw Water Stop precast concrete septic tank design and manufacturing process has been awarded a United States Patent. The seamless cover joint holding tank design eliminates leaks, and has enhanced durability.

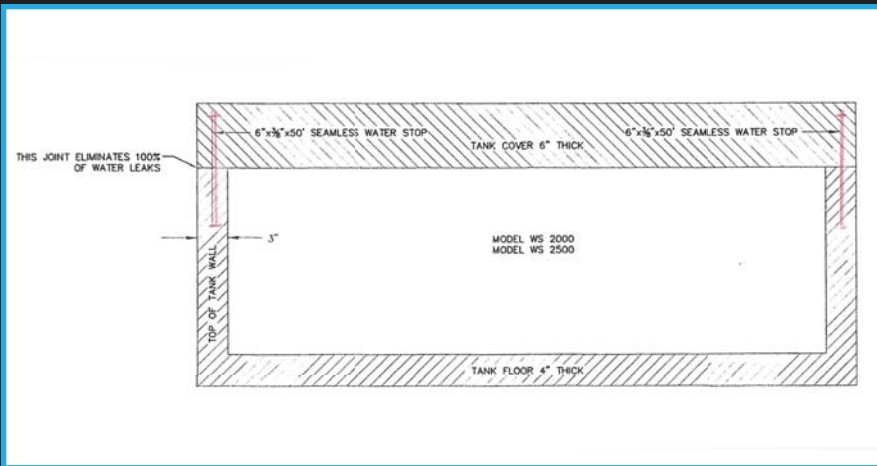
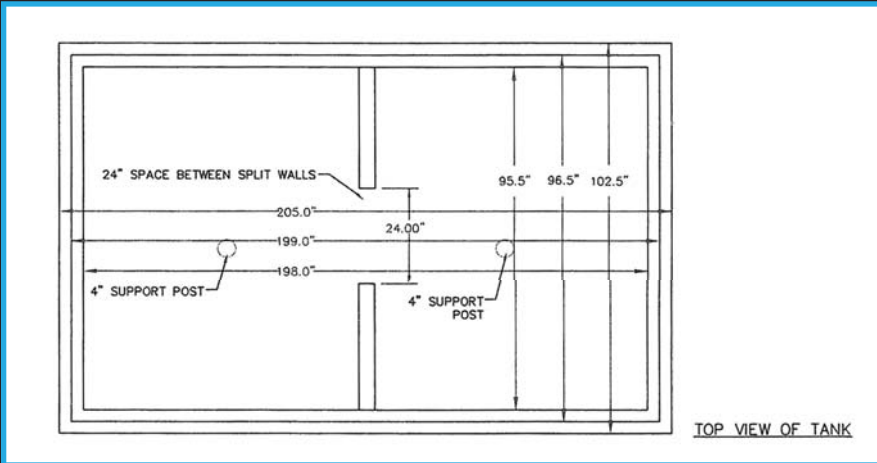
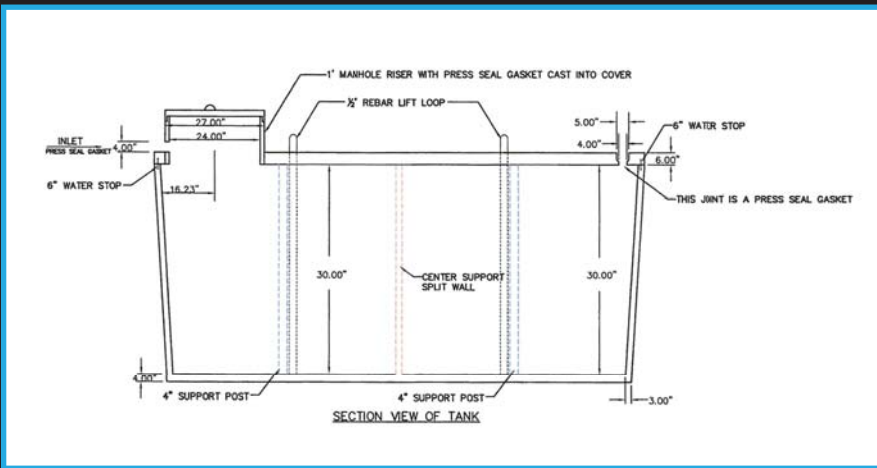


## FULLY ASSEMBLED DELIVERY

The WS Series tanks are delivered fully assembled and set on site in one piece, ensuring the best tank integrity and long range performance.

## SERVICE TERRITORY

Skaw Precast delivers and installs precast concrete tanks and products throughout Northwestern Wisconsin. For inquiries outside of our ordinary service territory please contact us.



## WS TANK SERIES SPECIFICATIONS

MODEL NUMBER	MAX. CAPACITY (GALLONS)	HEIGHT (INCHES)	INLET (INCHES)	LENGTH ID	WIDTH ID	LIQUID DEPTH	GALLONS PER INCH	WEIGHT (POUNDS)
WS 2000	2000	39	28	198.5	96	24	83.33	22,922
WS 2500	2500	39	40	198.5	96	30	83.33	23,000

## WHOLESALE AND RETAIL INQUIRIES CONTACT

Jack Skaw  
 Skaw Pre-Cast Company, Inc.  
 26255 105th St. New Auburn, WI 54757  
 715-967-2277 • www.skawprecast.com

