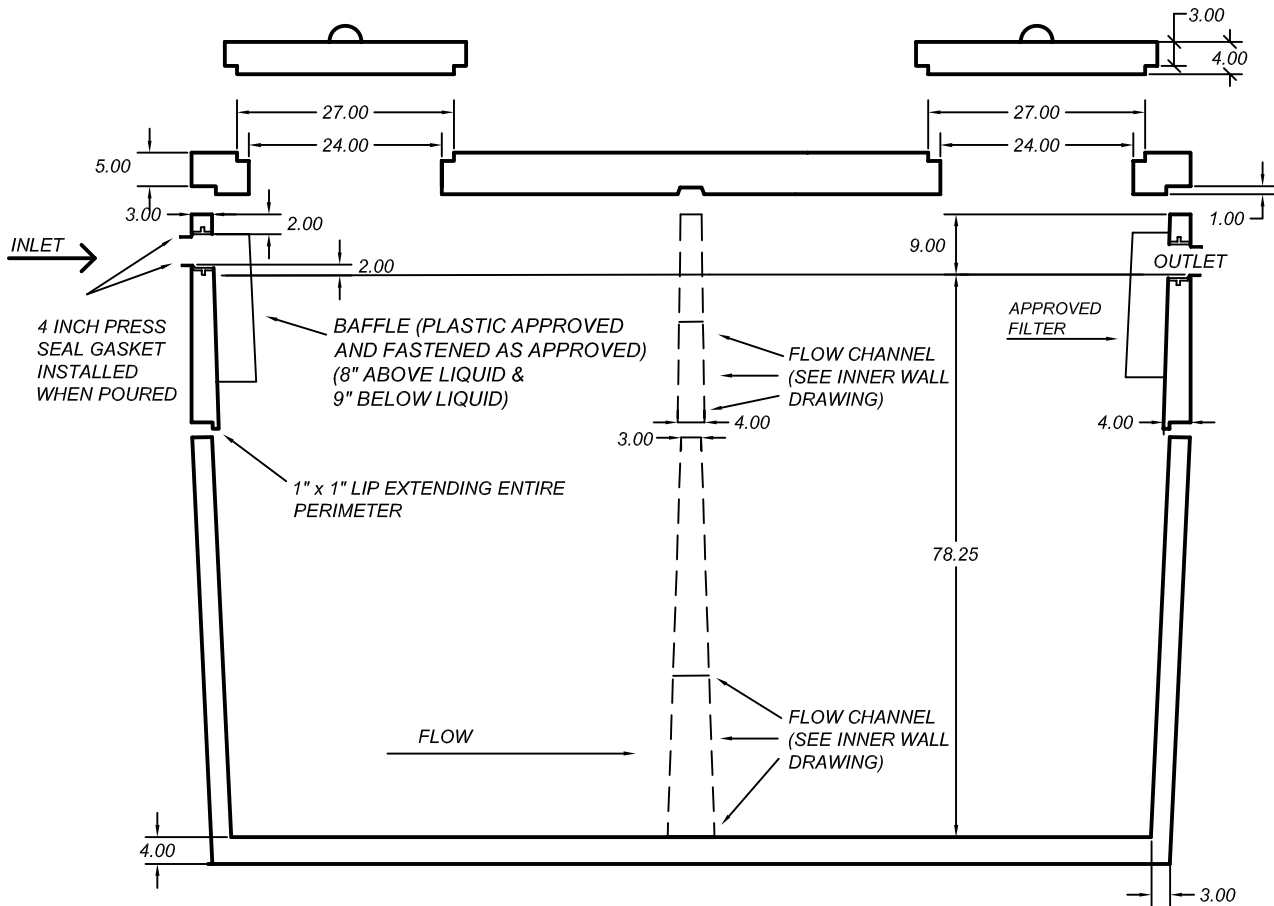
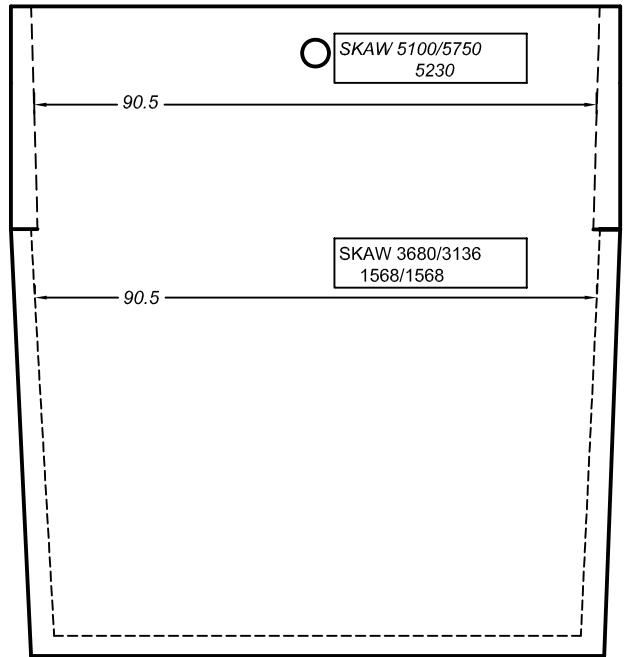


WARNING DEATH MAY OCCUR IF TANK IS ENTERED WITHOUT PROPER EQUIPMENT

NOTE: CROSS SECTION DRAWING DEPICTS EXTENSIONS FLOATING. (PRE-ASSEMBLED)
 NOTE: LIQUID DEPTH MEASUREMENT REFLECTS ASSEMBLED TANK DIMENSION.



SECTION VIEW OF TANK AND COVER



OUTLET END VIEW OF TANK

Model Number: **5100**

Approved for: SEPTIC, HOLDING, PUMP OR GREASE INTERCEPTOR

Weight	Inlet Dim.	Outlet Dim.	Liq. Depth	Gal. / In.	Max. Cap.
26,500 lbs.	85"	83"	78.25"	65.4	5,118 gal.

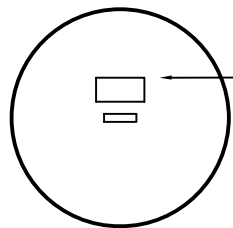
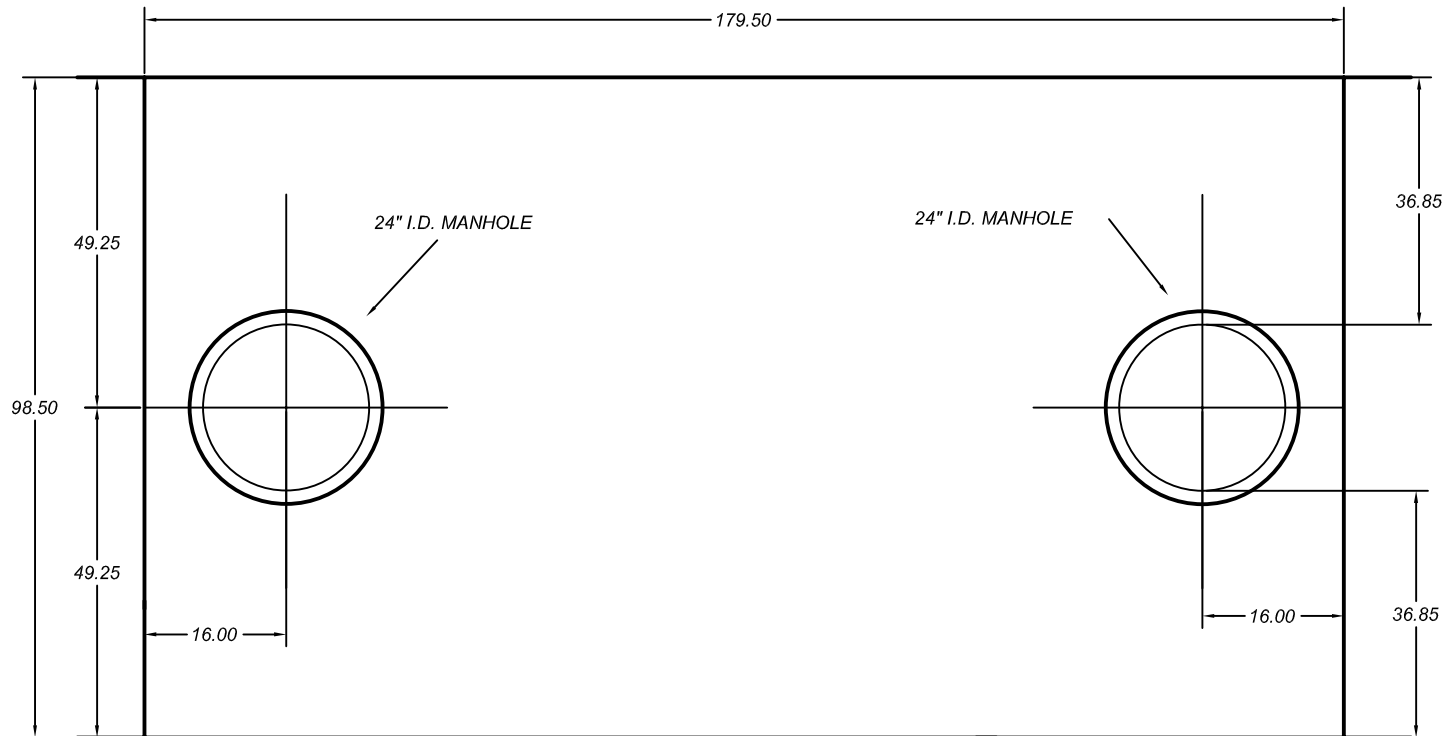
SKAW PRE-CAST

26255 105th Street, New Auburn
 Wisconsin 54757
www.skawprecast.com

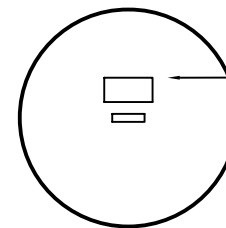
Phone: (715) 967-2277
 Toll Free: 1-800-924-8625
 Fax: (715) 967-2707

SKAW PRECAST 5100 GALLON SEPTIC TANK

TOP VIEW OF COVER



WARNING DEATH MAY OCCUR IF TANK IS ENTERED WITHOUT PROPER EQUIPMENT



WARNING DEATH MAY OCCUR IF TANK IS ENTERED WITHOUT PROPER EQUIPMENT

Model Number: **5100**

Approved for: SEPTIC, HOLDING, PUMP OR GREASE INTERCEPTOR

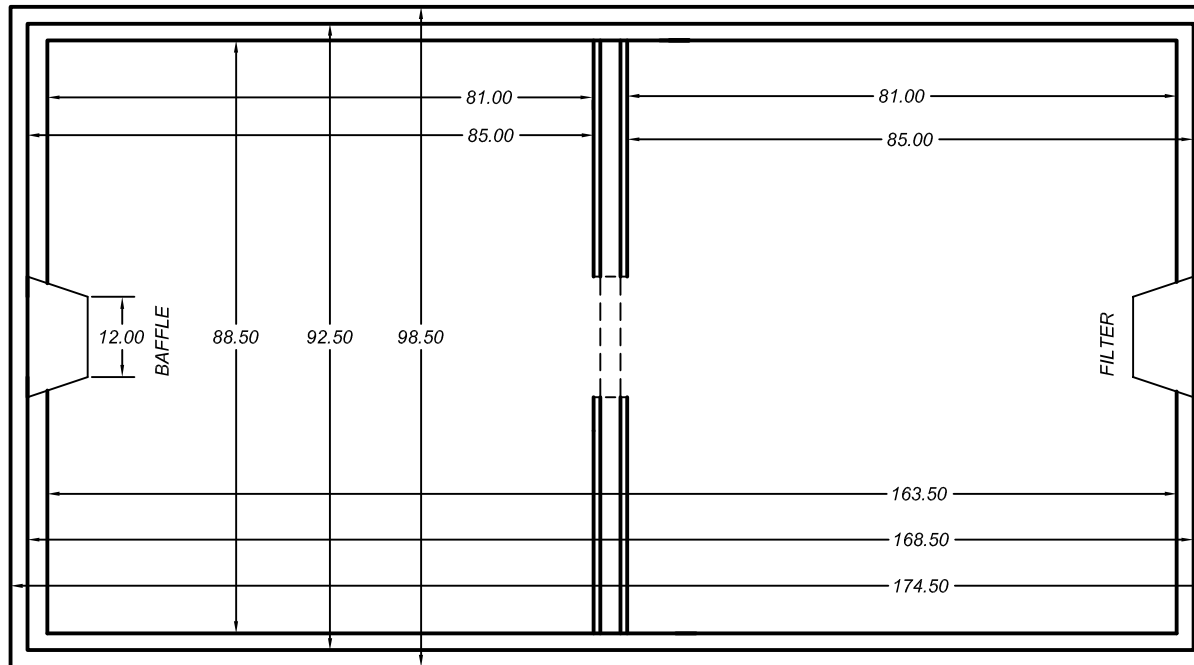
Weight	Inlet Dim.	Outlet Dim.	Liq. Depth	Gal. / In.	Max. Cap.
26,500 lbs.	85"	83"	78.25"	65.4	5,118 gal.

SKAW PRE-CAST

26255 105th Street, New Auburn
Wisconsin 54757
www.skawprecast.com

Phone: (715) 967-2277
Toll Free: 1-800-924-8625
Fax: (715) 967-2707

TOP VIEW OF TANK (TAPERED)



Model Number: **5100**

Approved for: SEPTIC, HOLDING, PUMP OR GREASE INTERCEPTOR

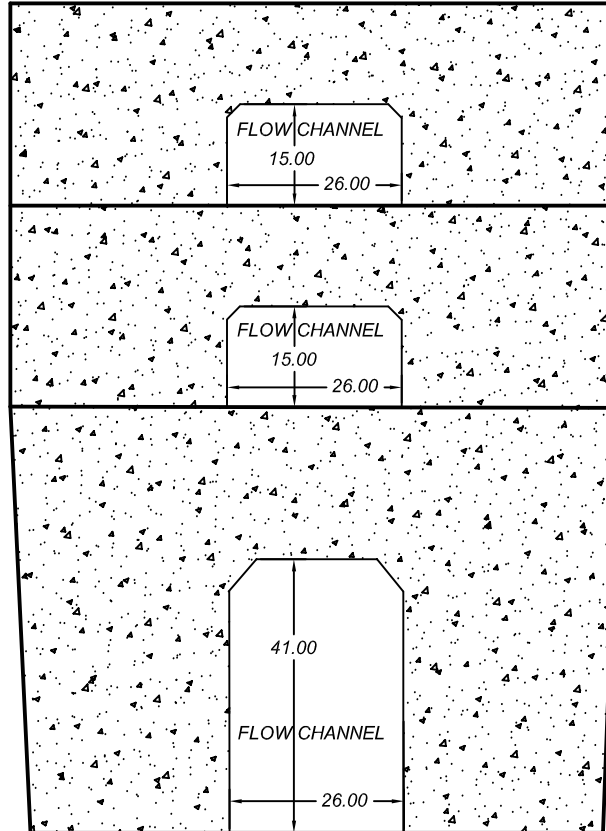
Weight	Inlet Dim.	Outlet Dim.	Liq. Depth	Gal. / In.	Max. Cap.
26,500 lbs.	85"	83"	78.25"	65.4	5,118 gal.

SKAW PRE-CAST

26255 105th Street, New Auburn
 Wisconsin 54757
www.skawprecast.com

Phone: (715) 967-2277
 Toll Free: 1-800-924-8625
 Fax: (715) 967-2707

SKAW PRECAST INNER WALL FLOW CHANNEL



SKAW: SECOND EXTENSION ON
A THREE PIECE TANK

SKAW: FIRST EXTENSION ON
A TWO PIECE TANK

SKAW: ONE PIECE TANKS
LARGER THAN 3000 GALLONS

OUTLET END VIEW OF TANK

Model Number: **INNER WALL FLOW CHANNEL**

Approved for: SEPTIC, SIPHON, HOLDING, OR PUMP CHAMBER

Weight	Inlet Dim.	Outlet Dim.	Liq. Depth	Gal. / In.	Max. Cap.
N/A	N/A	N/A	N/A	N/A	N/A

SKAW PRE-CAST

26255 105th Street, New Auburn
Wisconsin 54757
www.skawprecast.com

Phone: (715) 967-2277
Toll Free: 1-800-924-8625
Fax: (715) 967-2707