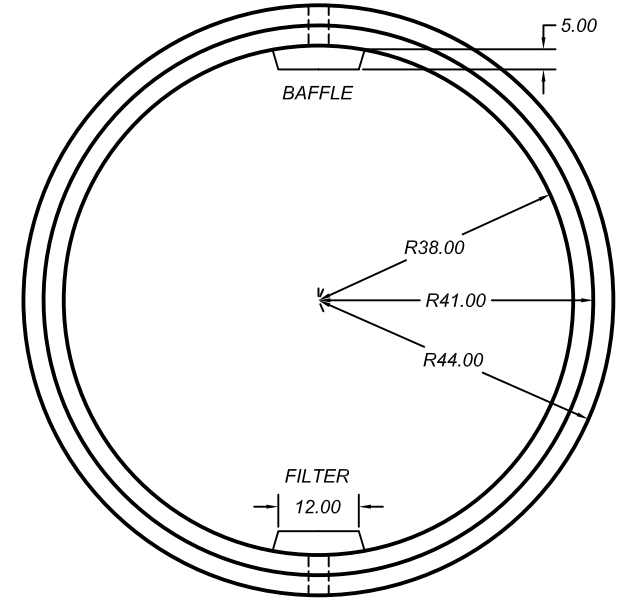


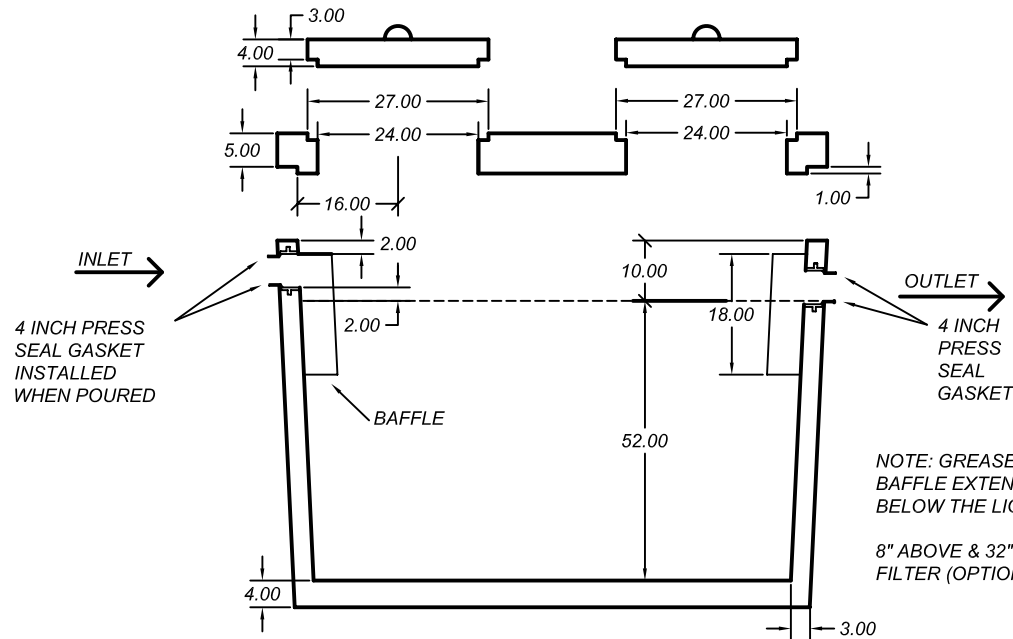
WARNING DEATH MAY OCCUR IF TANK IS ENTERED WITHOUT PROPER EQUIPMENT

\* GREASE INTERCEPTOR.

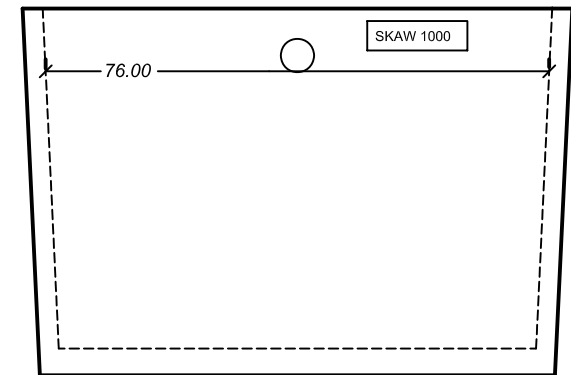
TOP VIEW OF MANHOLE COVER



TOP VIEW OF TANK (TAPERED)



SECTION VIEW OF TANK AND COVER



OUTLET END VIEW OF TANK

NOTE: GREASE INTERCEPTOR  
BAFFLE EXTENDS 8" ABOVE & 35"  
BELOW THE LIQUID LEVEL.

8" ABOVE & 32" BELOW  
FILTER (OPTIONAL).

Model Number: **1000 ROUND**

Approved for: SEPTIC, SIPHON, HOLDING, PUMP, OR GREASE INTERCEPTOR

**SKAW PRE-CAST**

26255 105th Street, New Auburn  
Wisconsin 54757  
www.skawprecast.com

Phone: (715) 967-2277  
Toll Free: 1-800-924-8625  
Fax: (715) 967-2707

Weight	Inlet Dim.	Outlet Dim.	Liq. Depth	Gal. / In.	Max. Cap.
8100 lbs.	58"	56"	52"	19.64	1021 gal.