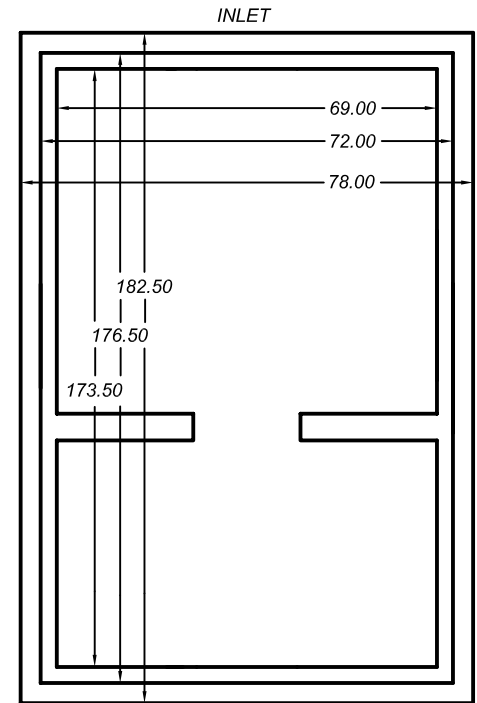


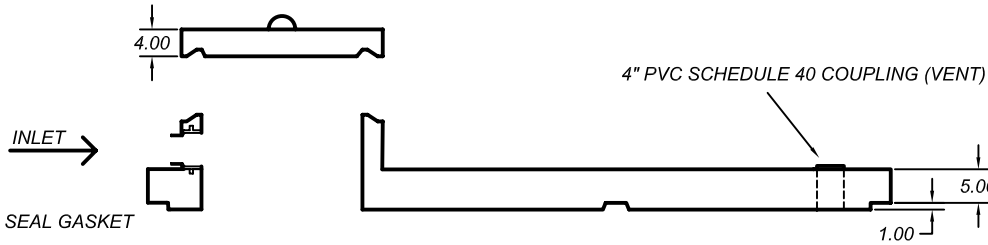
WARNING DEATH MAY OCCUR IF TANK IS ENTERED WITHOUT PROPER EQUIPMENT

NOTE: SEE INNER WALL PHOTO ON THE "EXCLUSIVELY AT SKAW'S" PAGE.

TOP VIEW OF MANHOLE COVER



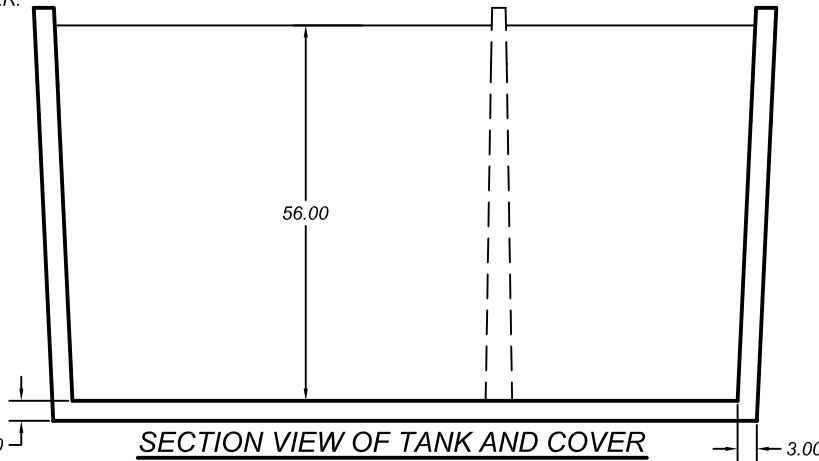
TOP VIEW OF TANK (TAPERED)



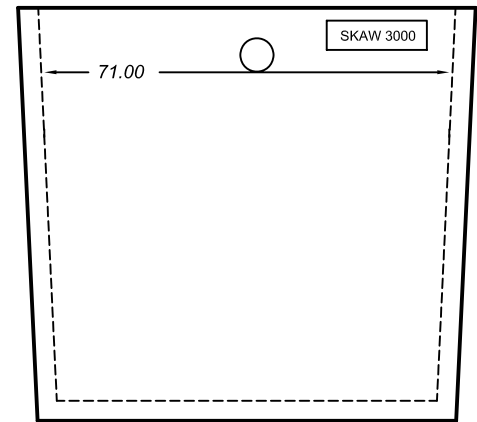
4 INCH PRESS SEAL GASKET
POURED INTO 1 FOOT RISER.
RISER IS THEN POURED
INTO TANK COVER.

4" PVC SCHEDULE 40 COUPLING (VENT)

INLET →



SECTION VIEW OF TANK AND COVER



OUTLET END VIEW OF TANK

Model Number: **3000 HOLDING**

Approved for: **HOLDING**

Weight	Inlet Dim.	Outlet Dim.	Liq. Depth	Gal. / In.	Max. Cap.
17,930 lbs.	67"	N/A"	56"	53.54	2998 gal.

SKAW PRE-CAST

26255 105th Street, New Auburn
Wisconsin 54757
www.skawprecast.com

Phone: (715) 967-2277
Toll Free: 1-800-924-8625
Fax: (715) 967-2707